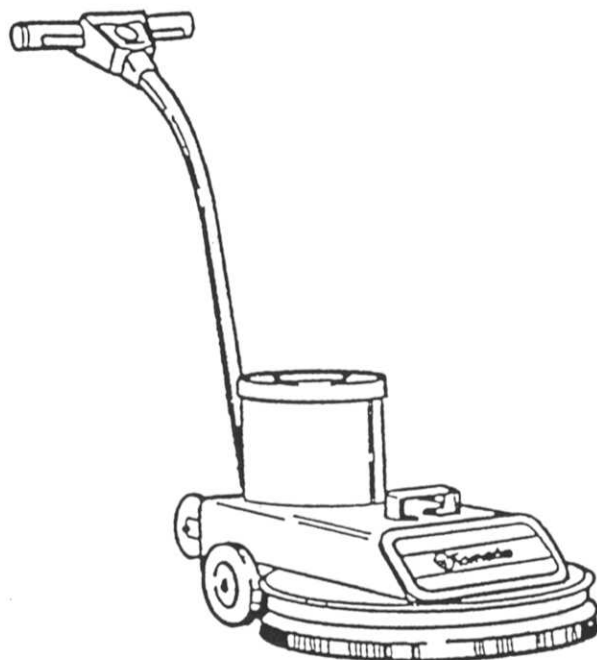


BREUER/TORNADO® CORP.
7401 W. LAWRENCE AVENUE
CHICAGO, IL 60656-3489
(708) 867-5100 FAX (708) 867-6968



GLAZER™

700/1500



CATALOG NO.

98440

98555

ILLUSTRATED PARTS

L1943S FOR COMMERCIAL USE ONLY
B/T 9-95

NOTES

This illustrated parts book covers:

CATALOG NO.	98440	98555
SERIES	P	E
SIZE	20"	20"
VOLTS	115	230/250
H.P.	1 1/2	1 1/2
U.L.	*	

*U.L. Listed CSA Certified

All specifications are subject to change without notice.

TABLE OF CONTENTS:

Safety Instructions	4
Grounding Methods	5
Exploded View	6
Parts List	7
Motor Components/ Wiring Diagram	8
Instructions	8 & 9

WARRANTY

Your Tornado® Machine has been thoroughly tested and inspected and is guaranteed to be free of defect in material and workmanship. Refer below for base warranty. This warranty does not cover normal wear items such as power cords, wheels and switches. Other items may apply or not apply based on your specific Tornado® machine. If such defects occur, this warranty is voided if service is attempted by non Authorized Tornado® Service Depot.

The Glazers are warranted as follows:

- 2 years on motor and powerheads
- 1 year on all other components (See Above)
- 1 year on labor

FOR COMMERCIAL USE
IMPORTANT SAFETY INSTRUCTIONS

When using an electrical appliance, basic precautions should always be followed including the following:

READ ALL INSTRUCTIONS BEFORE USING THIS APPLIANCE

WARNING To reduce the risk of fire, electric shock or injury:

Unplug machine when not in use. If handle switch lever is activated accidentally, high starting torque will cause machine to move and may cause damage or injury.

Unplug machine before:

- Leaving machine unattended
- Changing pads
- Attempting any maintenance or adjustment

This equipment is equipped with a three-conductor cable and three-prong grounding type plug to fit a grounding type receptacle. Do not break off or pull out the grounding prong on plug. Adapters are available for connecting three-prong grounding wire or terminal extending from the adapter must be connected to a permanent ground such as to a properly grounded electrical outlet box. If cord becomes frayed or damaged in any manner, replace. Otherwise possible electric shock may result.

Do not put hands under base - rotating parts could cause injury. Always keep hands feet and loose fitting clothing away from moving parts to prevent possible injuries. Use care to keep electrical supply cable from contacting moving parts, such as floor brushes or pads.

To avoid electrical shock, use indoors only. Do not use machine in areas where flammable and/or explosive vapors or dust are present.

Make sure voltage and frequency at the wall receptacle correspond with that indicated on name plate before plugging in machine. A 20 amp circuit is recommended. Right or left switch levers will independently operate the motor.

Never use a device to lock the switch lever in the "ON" position.

Use only a 12 Ga. three-wire extension cable which have 3-prong grounding type plugs and 3-prong receptacles that accept the machine's plug.

Always operate this machine with all of the cable removed from the handle. Failure to do so will upset the precision balance of the machine.

Do not add weight to this machine - this will upset the balance and may cause motor overload.

Pad holders and brushes must be properly maintained to insure maximum cleaning results.

- To avoid electrical shock do not expose to rain; store indoors.
- To avoid fire do not use with a flammable or combustible liquid to clean a floor.
- Risk of explosion. Floor sanding can result in explosive mixture of fine dust and air. Use this machine only in a well ventilated area, free from any flame or match.
- Do not add weight.
- Do not hop the brush or pad holder onto the machine.
- Disconnect before servicing.
- Do not store with brush, pad holder or pad on floor.
- Refer to this manual for additional instructions.

SAVE THESE INSTRUCTIONS

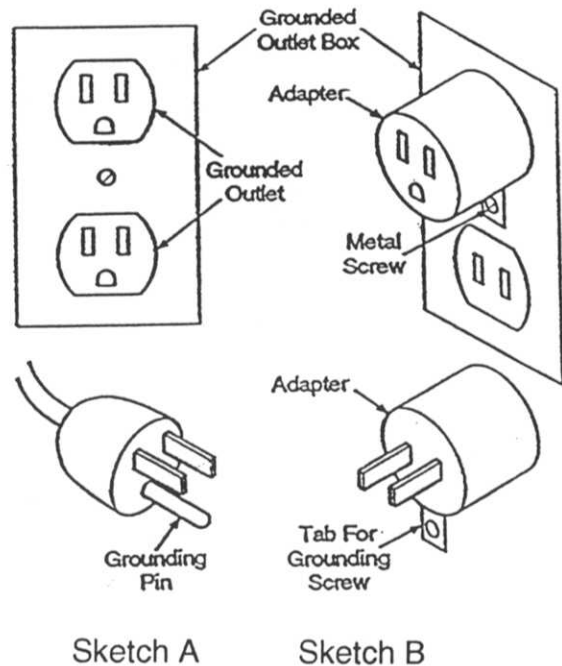
GROUNDING METHODS

GROUNDING INSTRUCTIONS

This appliance must be grounded. If it should malfunction or break down, grounding provides a path of least resistance for electrical current to reduce the risk of electric shock. This appliance is equipped with a cord having an equipment-grounding conductor and grounding plug. The plug must be plugged into an appropriate outlet that is properly installed and grounded in accordance with all local codes and ordinances.

WARNING: Improper connection of the equipment-grounding conductor can result in electric shock. Check with a qualified electrician or service person if you are in doubt as to whether the outlet is properly grounded. Do not modify the plug provided with the appliance; if it will not fit the outlet, have a proper outlet installed by a qualified electrician.

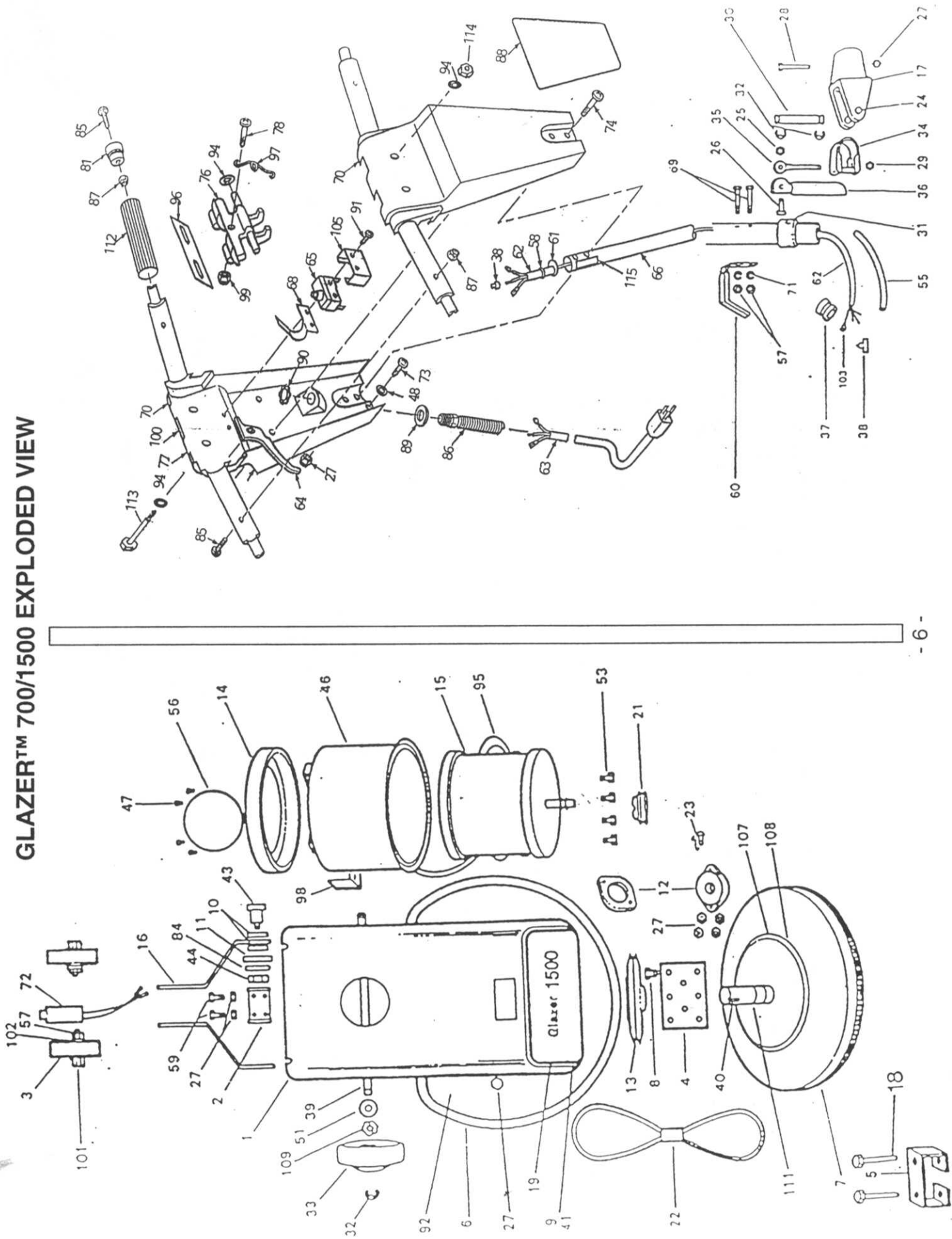
This appliance is for use on a nominal 120-volt circuit, and has a grounding plug that looks like the plug illustrated in sketch A. A temporary adapter that looks like the adapter illustrated in sketches B and C may be used to connect this plug to a 2-pole receptacle as shown in sketch B if a properly grounded outlet is not available. The temporary adapter should be used only until a properly grounded outlet (sketch A) can be installed by a qualified electrician. The green-colored rigid ear, lug or the like, extending from the adapter must be connected to a permanent ground such as a properly grounded outlet box cover. Whenever the adapter is used, it must be held in place by a metal screw.



EXTENSION CORDS

Use only three-wire extension cords that have three-prong grounding-type plug caps and three-pole receptacles that accept the appliance's plug. Replace or repair damaged cords.

GLAZER™ 700/1500 EXPLODED VIEW



PARTS LIST FOR GLAZER™ 700/1500

ITEM NO.	QTY	PART NO.	DESCRIPTION	ITEM NO	QTY	PART NO	DESCRIPTION
1	1	17123	Base S/A	58	2	01608	Hog Ring
2	1	12889	Handle Mtg. Bkt.	59	4	02109	Screw
3	2	11053	Wheel	60	1	10407	Cable Hook S/A
4	1	17304	Mounting Plate	61	1	15226	Strain Relief Washer
5	1	13064	Handle	62	1	18531	Handle Cable
6	1	12895	Bumper	63	1	04358	Cable 115v 75'
7	1	17553	Pad Driver	64	2	18969	Switch Lever
8	6	05427	Screw	65	1	06685	Switch
9	1	15479	Front Plate	66	1	17790	Handle Tube
10	14	03658	Washer	67	1	18997	Handle Casting
11	3	12554	Washer	68	1	17165	Switch Spring
12	2	14742	Bearing	69	2	10398	Screw
13	1	12905	Pulley	70	2	18996	Handle Casting
14	1	12909	Motor Cover	71	2	01574	Lock Washer
15	1	18581	Motor 115v	72	1	14038	Circuit Bkr Kit 115v
16	2	13374	Handle Strap	73	2	07534	Screw
17	1	10019	Handle Yoke	74	2	07536	Screw
18	2	16031	Screw	75	1	07537	Strain Relief Spring
19	1	15471	Logo	76	1	16154	Safety Lock
21	1	12916	Motor Pulley	77	1	14413	Warning Label
22	1	17283	Belt	78	1	03660	Screw
23	2	12918	Button Head Screw	80	2	10886	Screw
24	1	00058	Pin	81	1	17163	Handle Tip
25	3	01589	Hex Nut	82	1	19060	Switch
26	1	03361	Screw	83	1	12966	Terminal
27	15	00067	Nut	84	4	02568	Washer
28	1	04349	Screw	85	4	07532	Screw
29	1	03868	Locknut	86	1	16168	Strain Relief
30	1	07551	Shaft	87	4	07533	Nut
31	1	14037	Spacer	88	1	16170	Nameplate
32	4	03407	E-Ring	89	1	16159	Washer
33	2	14491	Wheel	90	1	16169	Locknut, conduit
34	1	07526	Clamp Band	91	2	17167	Screw
35	1	07547	Eye Bolt	92	1	16576	Bumper Plate
36	1	07883	Clamp Lever S/A	93	2	07536	Screw
37	1	12047	Strain Relief	94	5	17245	Washer
38	6	06824	Connector	95	1	13000	Lever Shroud
39	1	14022	Wheel Shaft	96	1	17166	Lever Shroud
40	1	12912	Key	97	1	17157	Lock Spring
41	6	04747	Screw	98	1	14490	Shaft Bracket
43	2	12922	Shoulder Screw	99	1	10894	Nut
44	2	12915	Nut	100	1	17154	Label
46	1	12906	Motor Cover Ring S/A	101	1	01978	Insulator
47	4	15475	Screw	102	2	11077	Spacer
48	2	01713	Lock Washer	103	3	00611	Ring Terminal
49	4	13773	Screw	105	1	17900	Insulator
51	4	12957	Washer	107	4	03959	Screw
53	4	13731	Screw	108	8	03536	Lock Washer
55	1	12969	Sleeving	109	4	07132	Wave Washer
56	1	15477	Decal Top Cover	110	1	14471	Label
*	1	15227	Warning Label	111	1	14753	Drive Shaft
*	1	06721	Strain Relief	112	2	17162	Handle Sleeve
*	2	14560	Wire Tie	113	2	18991	Screw - Shoulder
*	1	15228	Warning Label	114	2	01477	Nut - Hex
*	1	90599	Pad Retainer S/A	115	1	16979	Decal-"Warning Risk..

* NOT SHOWN

SEE PAGE 8 FOR INDIVIDUAL MOTOR COMPONENTS

MOTOR COMPONENTS

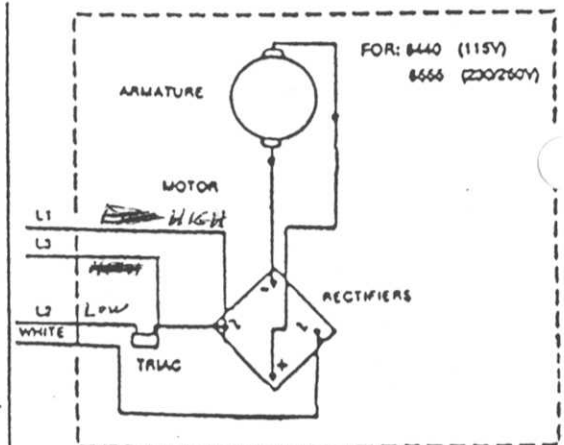
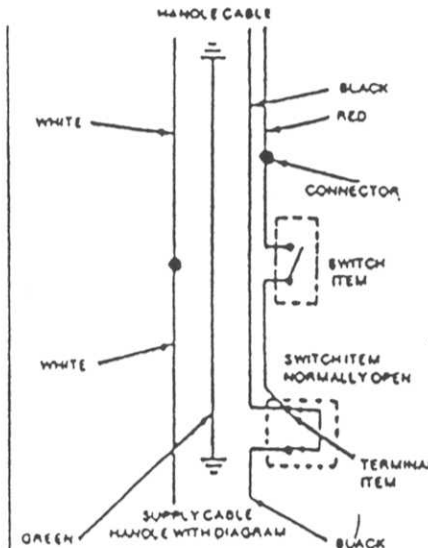
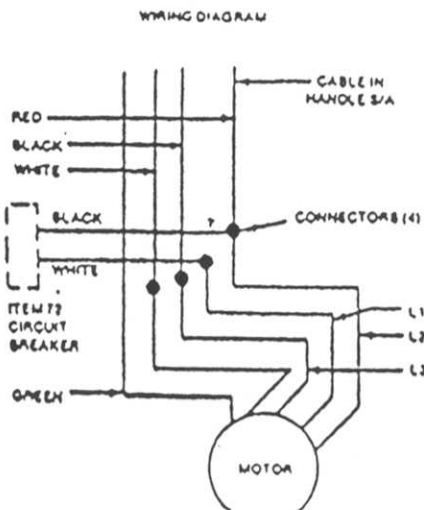
24/85

Qty.	Part No.	Description
1	23934	Rectifier S/A 115v
1	23934	Rectifier S/A 230v
1	14702	Brush Card S/A 115v
1	14475	Brush Card S/A 230v
1	23920	End Bell S/A 115v
4	21007	Brush Spring
2	23919	Carbon Brush
1	02349	Bearing Comm. End
1	13134	Bearing Fan End
1	13136	Spring Washer
1	23935	Fan
1	23922	Armature 115v

13/38 TRIAC

WIRING DIAGRAM

TO TEST LOW
SPEED, SWITCH
BLACK-L2
L1-L3



GLAZER™ 1500 INSTRUCTIONS

GENERAL INFORMATION

Your Glazer™ 1500 is shipped with handle in an inverted position. See instruction sheet enclosed in packet for assembly.

WARNINGS

1. Unplug machine when not in use. If handle switch lever is activated accidentally high starting torque will cause machine to move and may cause damage or injury. Unplug machine before:
 - Leaving machine unattended
 - Changing pads
 - Attempting any Maintenance or Adjustment

2. Never operate this machine unless plug is grounded - failure to ground could cause electrical shock.

This appliance is equipped with a three-conductor cable and three-prong grounding type plug to fit a grounding type receptacle. Do not break off or pull out the grounding prong on plug. Adapters are available for connecting three-prong grounding type plugs to two-prong receptacles. The grounding wire or terminal extending from the adapter must be connected to a permanent ground such as to a properly grounded electrical Outlet Box. If cord becomes frayed or damaged in any manner, replace. Otherwise possible electric shock may result.

3. Do not put hands under base - rotating parts could cause injury. Always keep hands, feet and loose fitting clothing away from moving parts to prevent possible injuries. Use care to keep electrical supply cable from contacting moving parts.
4. To avoid electrical shock, use indoors only. Do not use machine in areas where flammable and/or explosive vapors or dust are present.
5. Make sure voltage and frequency at wall receptacle correspond with that indicated on nameplate before plugging in machine. 20 amp circuit recommended. Right or left switch levers will independently operate motor.

Never use a device to lock the switch lever in the "ON" position.

Use only 12 ga. three-wire extension cable which have 3-prong grounding type plugs and 3-prong receptacles that accept the machine's plug.

6. Always operate this machine with all of the cable removed from the handle. Failure to do so will upset the precision balance of the machine.

Do not add weight to this machine - this also will upset the balance and may cause motor to overload.

If the pad holder needs to be replaced, be sure to specify genuine TORNADO holder when ordering to assure precision balance of your machine.

OPERATION AND MAINTENANCE

When starting machine, grasp handles tightly to counter act the high starting torque. After initial start, machine is easy to control. Do not lift up on handle, hold steady on floor. Squeeze switch lever to start; release to stop. A circuit breaker is located on the lower left hand side of base. Should an overload occur, attempt to locate the cause and reset the breaker by pressing the black button.

POLISHING

Use 3/4" to 1" thick high speed burnishing pads. Floors should be dry mopped to remove grit. Start at point nearest electrical outlet and walk in a straight line as far as cable will allow. Then turn 180° away from cable and machine in a path parallel to, and slightly overlapping the first pass.

SPRAY BUFFING

Use 3/4" to 1" thick burnishing pad. The spray buff solution should be applied to the floor ahead of the machine. Do not run the machine into the spray or mist of the spray buff solution. Use the same straight line technique described in the Polishing section.

DAMP BUFFING

Use 3/4" to 1" thick burnishing pad. Use a well wrung out mop to apply damp buffing solution. Go over dampened surface with machine until surface is dry and has a high glaze.

STORING

Store with pad off the floor by tilting machine back on the support wheels.

BELT MAINTENANCE

To change a broken or worn belt, first unplug cable. Turn machine over, loosen (4) hex bolts so that motor can be moved forward in slots in base. Remove (6) screws around base handle and (2) screws holding base handle. This will expose access hole. Slip belt off pulleys and out through access hole. Slip new belt in access hole and over pulleys. Re-assemble (6) screws holding access panel and (2) screws holding handle (be certain holes in bearing ring are located under holes in base handle). Pull motor back to tension the belt. (.16 inch belt deflection when force of 2 pounds is applied against outside of belt). Re-tighten hex bolts. Turn machine upright.

To tighten belt, unplug cord. Turn machine over, loosen (4) hex bolts and pull motor back to tension the belt per above paragraph.

MOTOR MAINTENANCE

(Carbon motor brushes should be changed only by an Authorized Service Representative.)

Check carbon brush wear every 500 hours. Replace when brushes are 3/8" long or when carbon brush light turns on.

To inspect carbon brushes:

1. Unplug cable.
2. Unscrew (4) screws at top of motor cover. Remove motor cover and cover ring. Brushes (4) are accessible inside large openings near the top of motor.
3. Loosen screw securing brush lead, lift spring of brush, and gently pull brush out.
4. Reverse step to reassemble making sure screws are tight on brush wire and that leaf spring is over end of brush.

